

**Solar Camera**  
**CMIP9C82W-28SD-4G**  
Battery and Mount Installation  
Perry Chung



## Sim Card Installation

The sim card must be Micro format sized. On the underside of the camera, there is a panel labelled SETTING. Unscrew the 2 Torx screws and remove the plate to reveal the slots for the SIM and MicroSD card, as well as the reset button.

Place in the SIM Card and, if used, the microSD card into the appropriate slots.



No Cards



With Cards





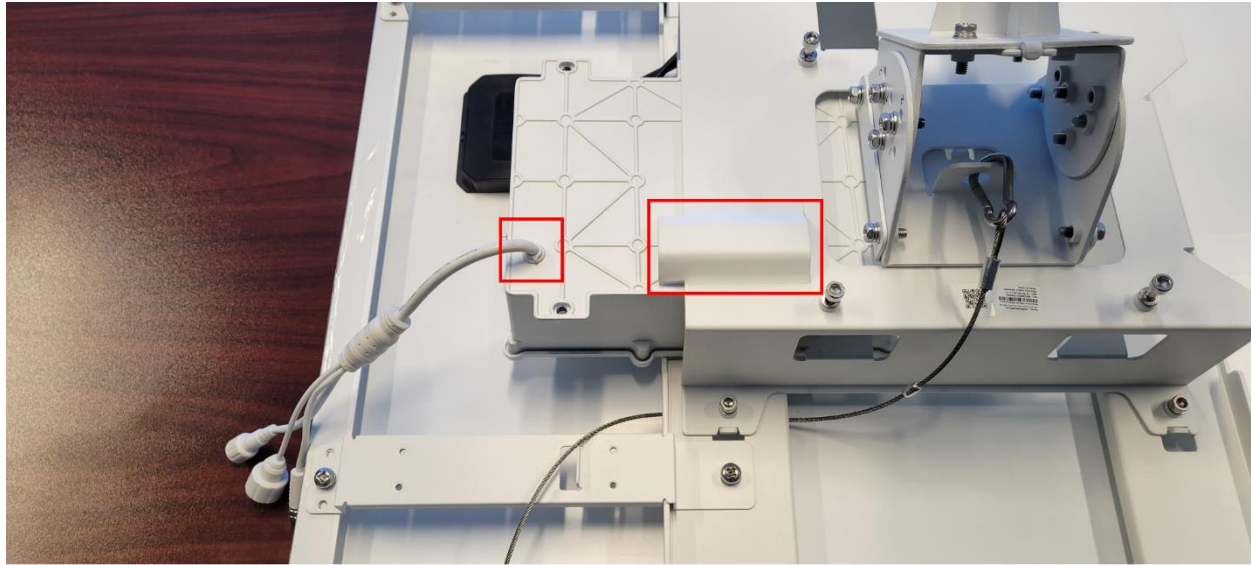
The included instructions for the physical installation of the solar camera is low resolution and difficult to follow. The following instructions are written to clear up any confusion with the installation of the battery and the mount to the main solar panel.

The battery is a separately purchased item, it comes in it's own box and looks like so:

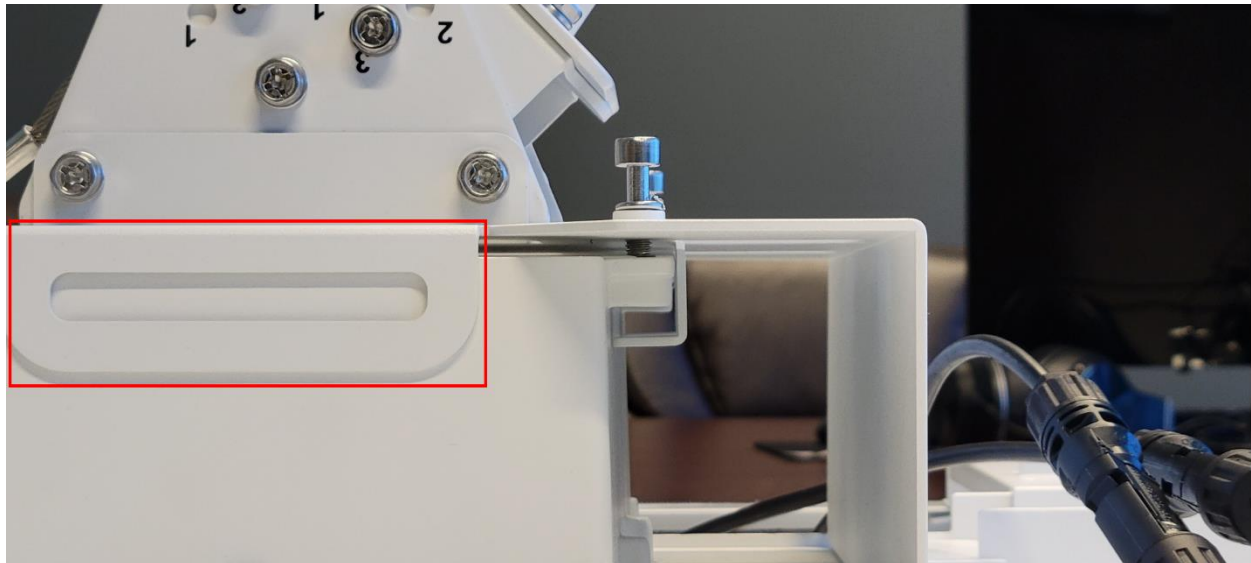




To mount the battery to the solar panel, slide the battery into the center cavity on the rear side of the solar panel. Note that there is a raised section, this is to allow space for the battery connectors to slide out.

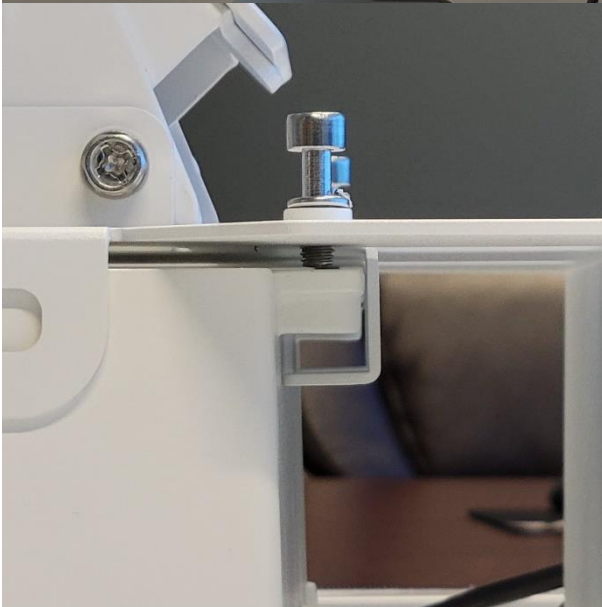
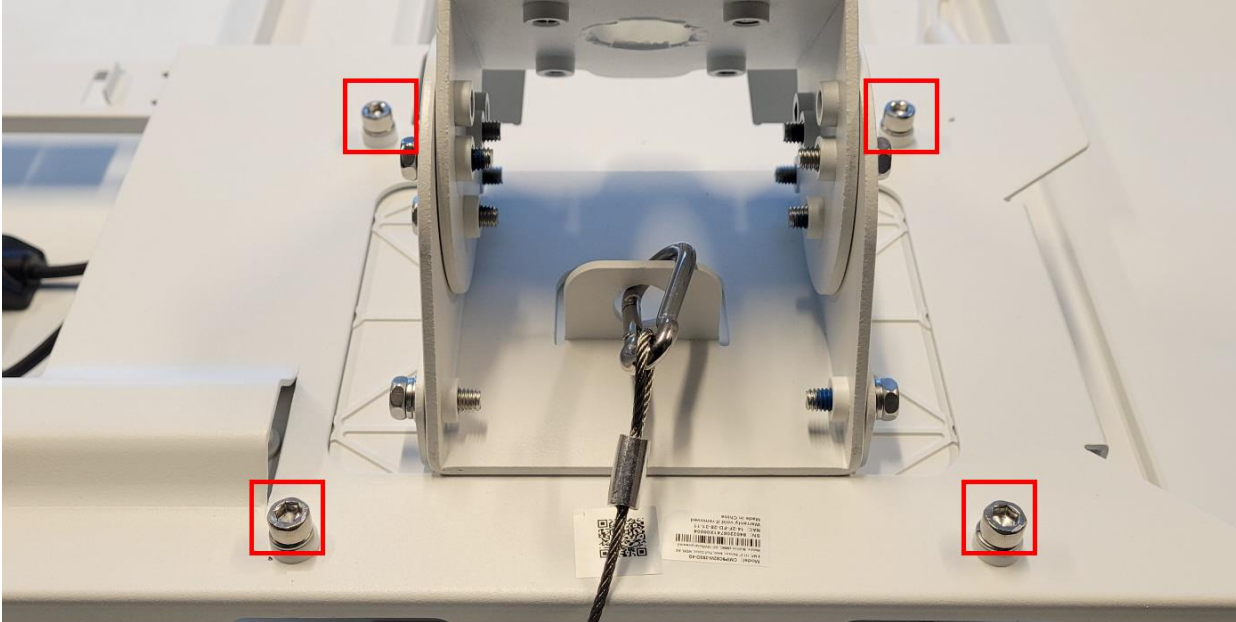


Slide the battery in until it can no longer go any further. It will be stopped by a lip on the other end.



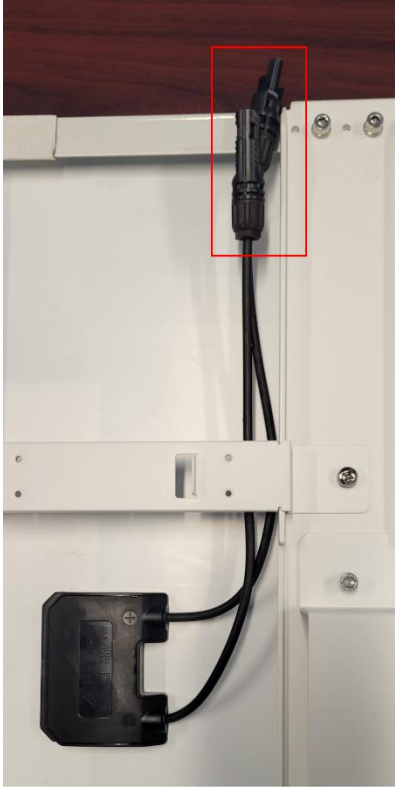


The battery is now in position to be mounted to the panel. There are 4 hex screws that need to be screwed down all the way to hold the battery.

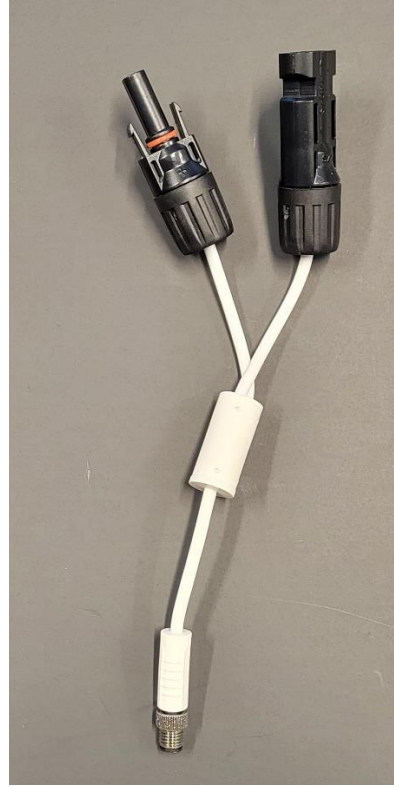




There are 3 connectors coming from the battery. The MC4 connection from the panel goes to an adapter that converts to a 4pin connector. The adapter is found in the solar panel/camera box.



Solar Panel MC4



MC4 Adapter

Connect the MC4 Adapter to the MC4 connections from the solar panel.



Unconnected



Connected

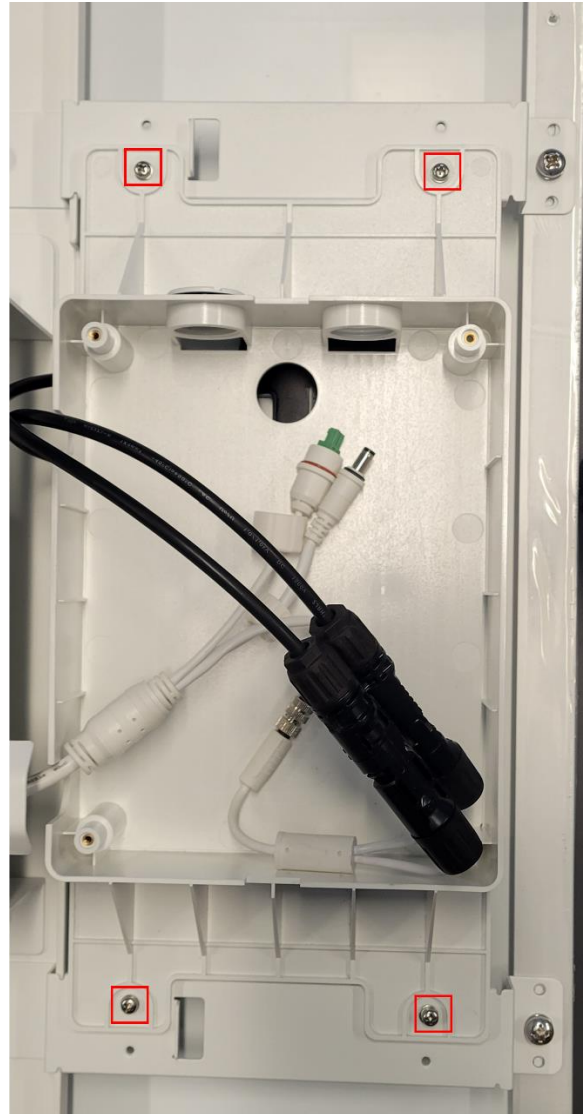




There is a cable management box that is included with the solar panel that can be mounted next to the battery. This should be done prior to connecting the panel to the battery.



Without Box

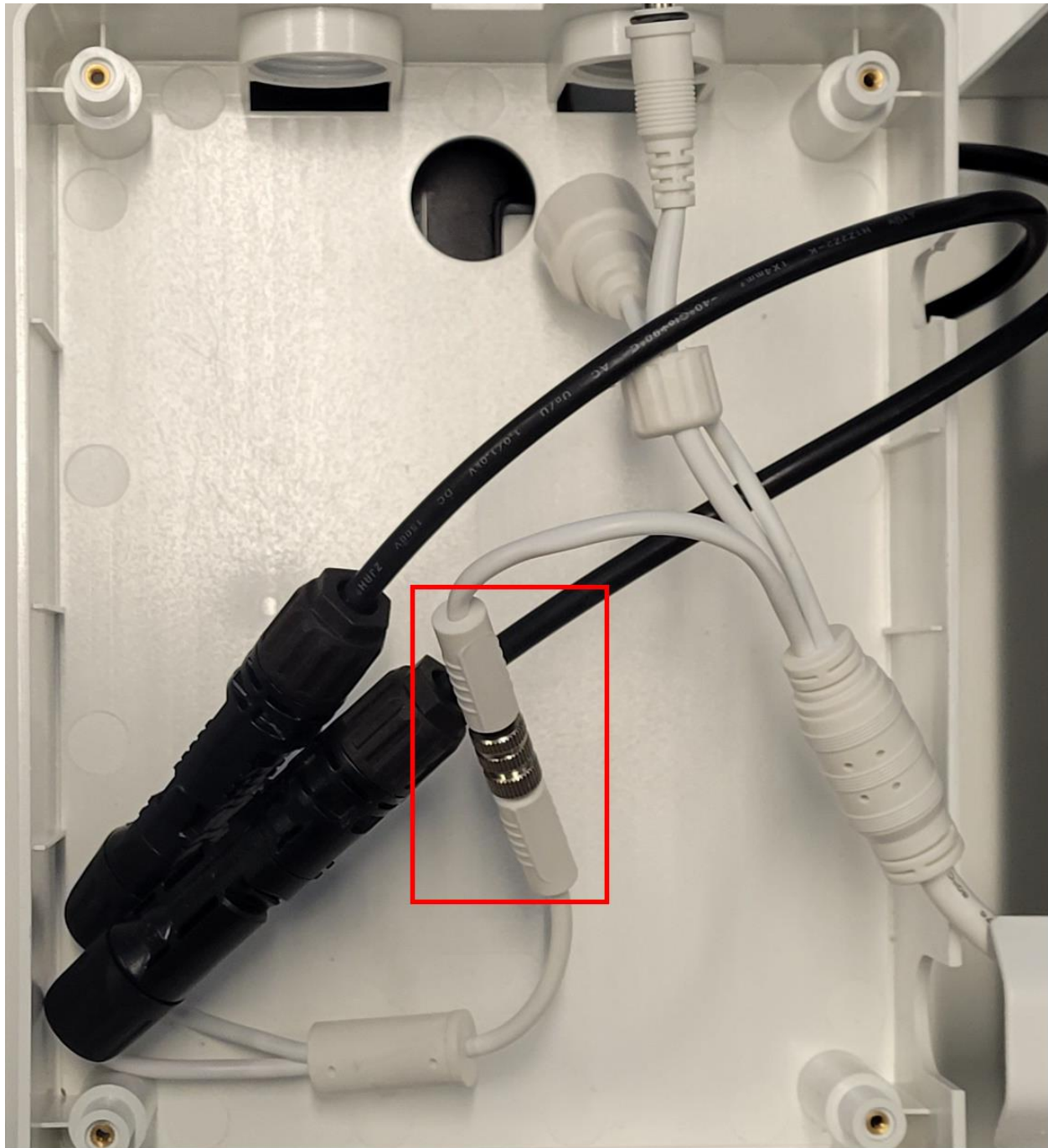


With Box





Afterwards, connect the solar panel connector to the battery 4 pin connector.

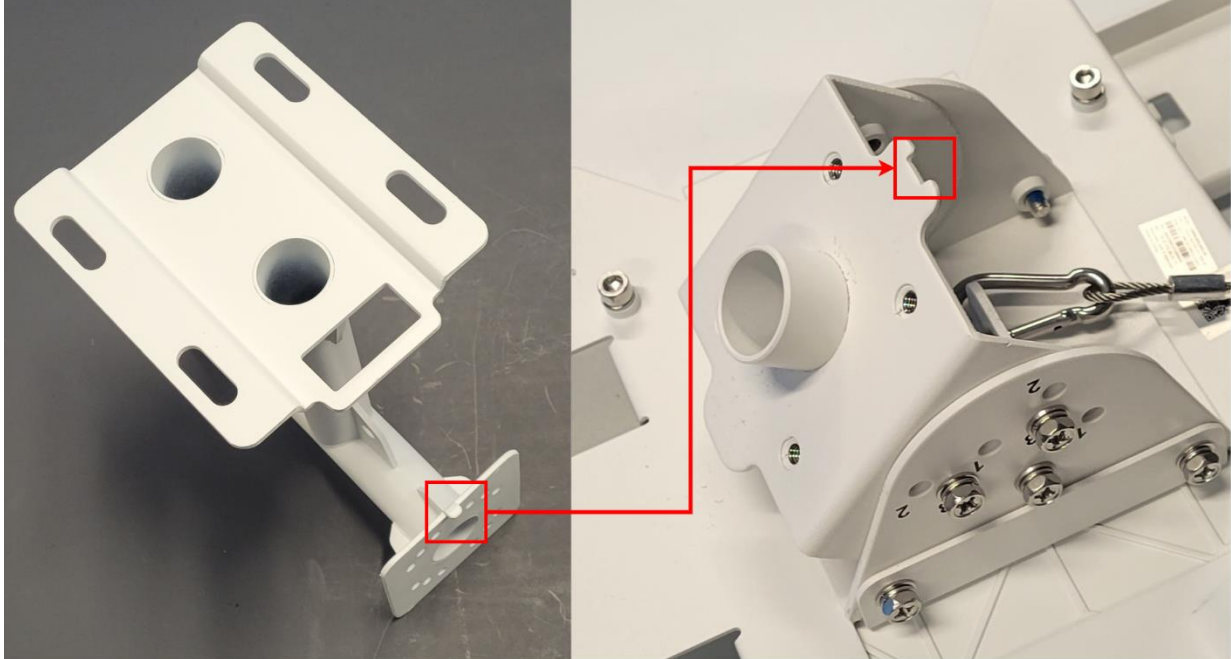




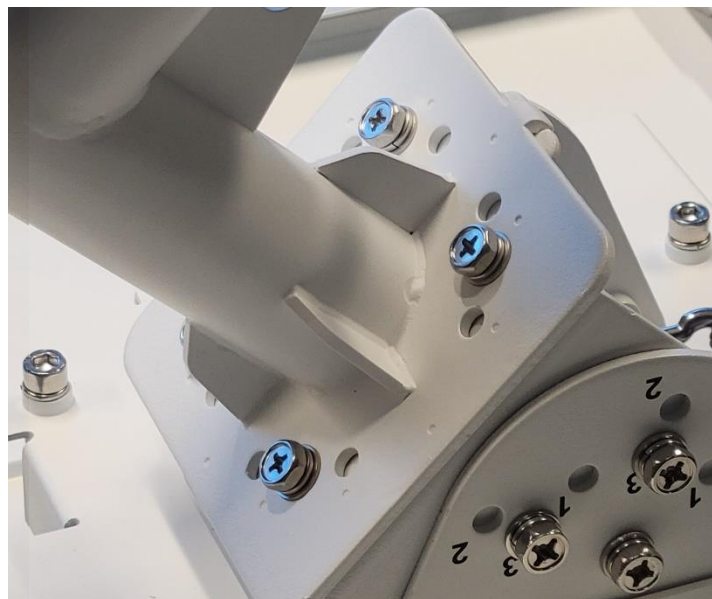


### Main Camera Bracket

There is a bracket found in the solar panel box that is meant to connect the camera and solar panel to a pole. There is an indexing tab found on the bracket that is meant to index to a specific location on the back of the solar panel.



First mount the bracket to the pole that the camera is meant to be placed on. The indexing section should be pointing upwards towards the sky. Afterwards place the panel onto the top of the mounting bracket. Screw the bracket to the solar panel using 4 screws that can be found in one of the bags within the solar panels packaging box.

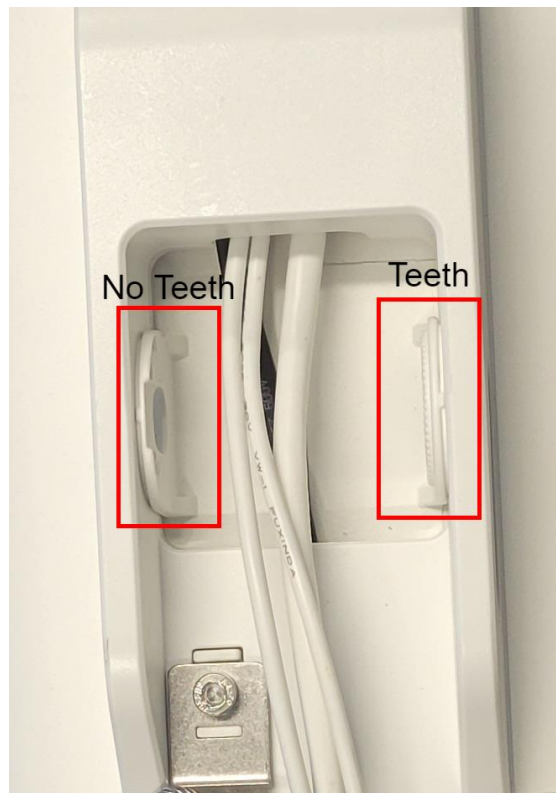




The camera will be mounted onto the other end of the bracket. There are 2 screws that lock the rotation of the camera mounting point. These need to be screwed down to hold the position of the camera.



On the underside of the camera, one side of the camera mounting point will have teeth to engage on the bracket. The other side will not have any teeth.



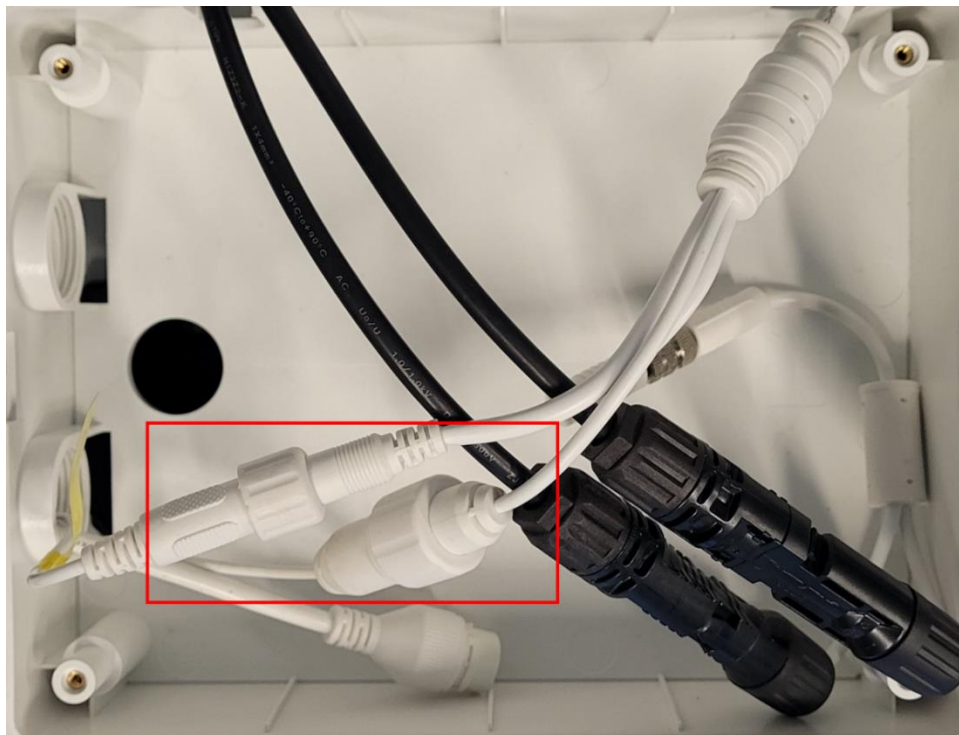
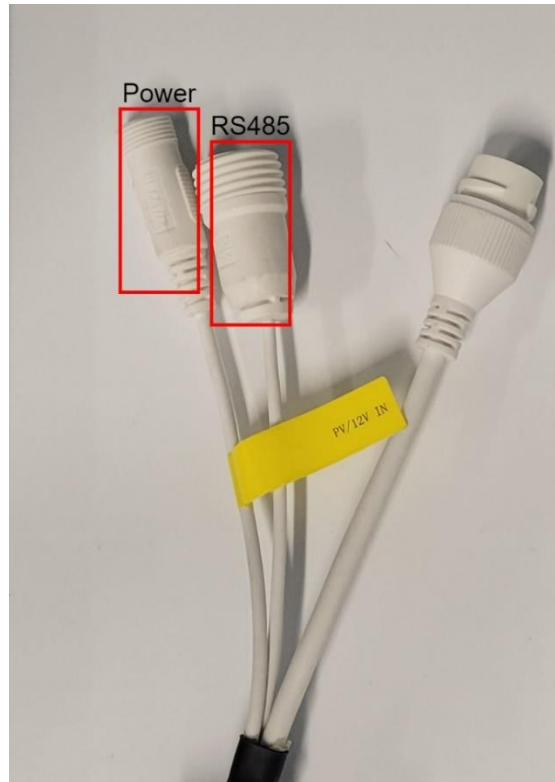


Mount the camera to the end of the bracket, ensure that the side with teeth engage with the camera teeth. Using the included long hex screw, lock in the camera to the bracket. This concludes the physical installation of the camera.





The last step is to connect the camera to the battery. There are 2 connectors: power and RS485.





### Network Setup:

If the SIM card can connect to the service network, an IP address will appear in the Wireless Dial menu. This is enabled by default.

The screenshot displays the configuration interface for a device, specifically the 'Wireless Dial' settings. The interface is divided into a left sidebar and a main content area. The sidebar contains a menu with 'Network' selected, and 'Basic Settings' highlighted. The main content area shows the 'Wireless Dial' configuration, which is enabled by default. A 'SIM Card' section indicates that 'SIM 1' is connected and has an IP address of 28.23.211.14. Below this, there are fields for 'Dial Mode' (Auto), 'Network Mode' (4G), 'Offline Time' (3600s), 'Phone', 'Access Number', 'User Name', 'Password', 'APN', 'MTU' (1400), and 'Verification Protocol' (Auto). A 'Save' button is located at the bottom of the configuration area.

Annotations in the image:

- #1: Red box around the 'Network' menu item in the sidebar.
- #2: Green box around the 'Wireless Dial' tab in the main content area.
- #3: Orange box around the IP address '28.23.211.14' in the SIM Card section.





PT Cloud is enabled like any other camera. If the camera has not connected to the wireless network yet, PT Cloud may show as offline.

The screenshot displays the configuration page for an LTS Platinum device. The interface is divided into a left sidebar and a main content area. The sidebar contains menu items: System, Network, Basic Settings, **Advanced Settings** (highlighted), Video/Audio, Image, Event, Storage, and Proactive Mode. The main content area has tabs for various settings: SNMP, FTP, Email, **PT Cloud** (selected), HTTPS, QoS, 802.1x, and Integration Pt. Under the PT Cloud tab, the following settings are visible: PT Cloud Mode is set to 'PT Cloud'; the 'Enable' checkbox is checked; the Server IP is 'litedev.guardingvision.com' with an unchecked 'Custom' option; the Register Status is 'Online'; and the Verification Code is masked with six dots. A detailed note below the verification code field states: '6 to 12 characters allowed, including upper-case and lower-case letters, and digits. To ensure device security, a combination with at least 8 characters of all the three above mentioned types is recommended. Note: The 6-character combination "ABCDEF" and any other case sensitive combination of this alphabetical order are not allowed.' A blue 'Save' button is located at the bottom of the configuration area.

